

# MARK



Rotary Screw Compressor  
MSM MINI 2,2 - 3 - 4 - 5,5 - 7,5 <sup>NEW</sup> kW

TECHNOLOGY YOU CAN TRUST

# The MSM Mini Range

MINI 2,2 - 3 - 4 - 5,5 - 7,5 kW

A solution to satisfy all needs



## Base Mounted Version

Especially recommended for installations near the place of use or the expansion of existing systems.

The electrocompressor's main components are: air suction filter, compressor, electric motor, oil filter and cooler, air cooling system, electrical panel for power-on and adjustment, support base and elegant sound-proof casing.

## Tank Mounted Version

Particularly recommended for new or stand-alone installations where there is a need for compressed air with a low noise level.

The unit consists of an electrocompressor on a fixed, 200-litre tank.



## Versione Dry

Especially recommended for installations with compressed air demand with a low dew point.

The compression unit is made up of electrocompressor, tank and refrigerating dryer with gas R134a with indicator of the Dew Point and timed condensate drain.

# Reliability

## MARK has been producing compressed air since 1970

It is a compressor constructed with components that have been tested for years in many industrial plants.

- A high-efficiency screw assembly.
- top brand-name components.
- high-tech assembling.
- industrial compressor know-how.
- the MSM MINI compressor's reliability is the result of decades of experience in the production and treatment of compressed air.



MSM MINI comes standard with a magneto-thermal circuit-breaker main switch that protects both the machine and the power line.

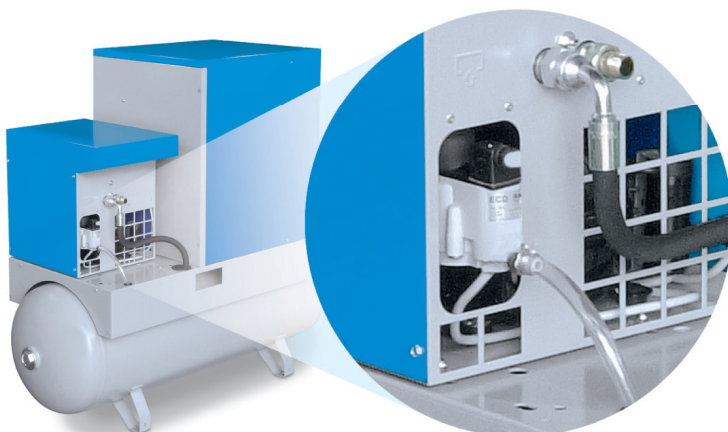
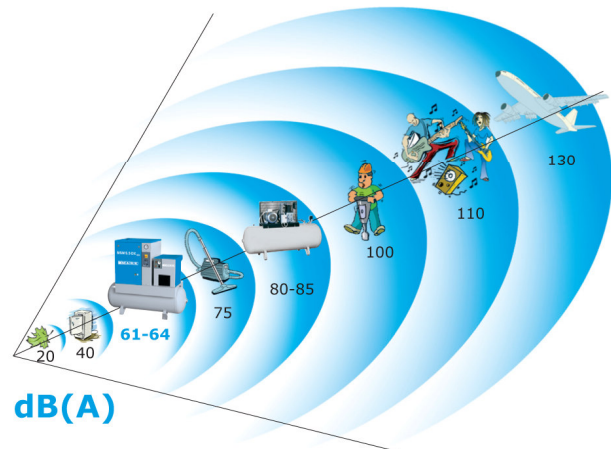
All machine parts are protected against any anomaly and nothing is allowed to irreparably damage any component or the machine.

The strict observance of safety and environmental hygiene regulations during the design phase and the high degree of efficiency of our assembly lines are our guarantee.



## Maxi low noise level

Given the type of user, the noise pollution produced by small-power compressors was never given the proper attention until now but with MSM MINI, the problem has been eliminated.



## Smart condensate drain

### Advantages

- Draining only water and NOT compressed air = Energy savings
- Quiet, no acoustic impact = Respect for the environment

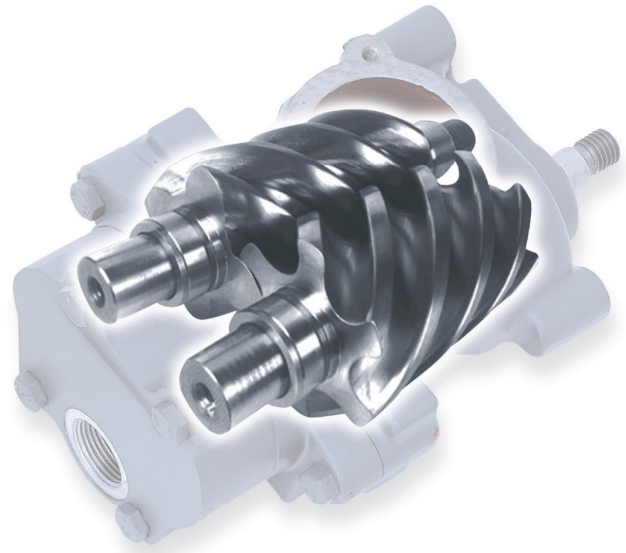


# Technology

## Screw Compressor

A small-power machine with big-compressor components:

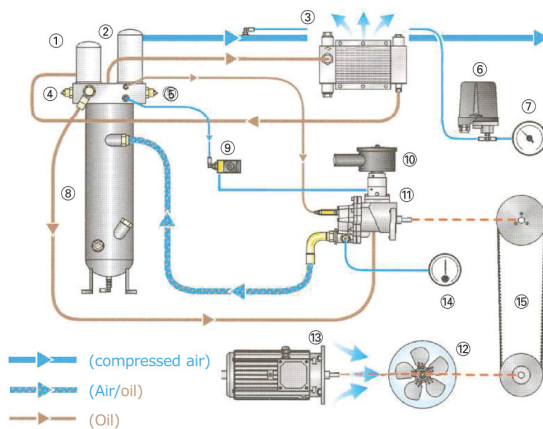
- a high-efficiency screw unit for compressing air without metal parts touching;
- an efficient cooling system;
- dry air in the DRY version with dryer;
- completely automatic operation for an industrial service;
- a complete compression unit ready to use.



## Adjustment

A new adjustment concept, created by combining the advantages of a piston compressor with those of a screw compressor.

Simple and complete instrumentation for correctly using and operating the compressor.



- 1 - Oil filter
- 2 - Air-oil separator filter
- 3 - Oil cooler
- 4 - Thermostatic valve
- 5 - Safety valve
- 6 - Pressure switch
- 7 - Pressure gauge
- 8 - Oil reservoir

- 9 - Air suction solenoid valve
- 10 - Air suction air filter
- 11 - Screw compressor
- 12 - Fan
- 13 - Electric motor
- 14 - Thermometer/Thermostat
- 15 - Transmission unit

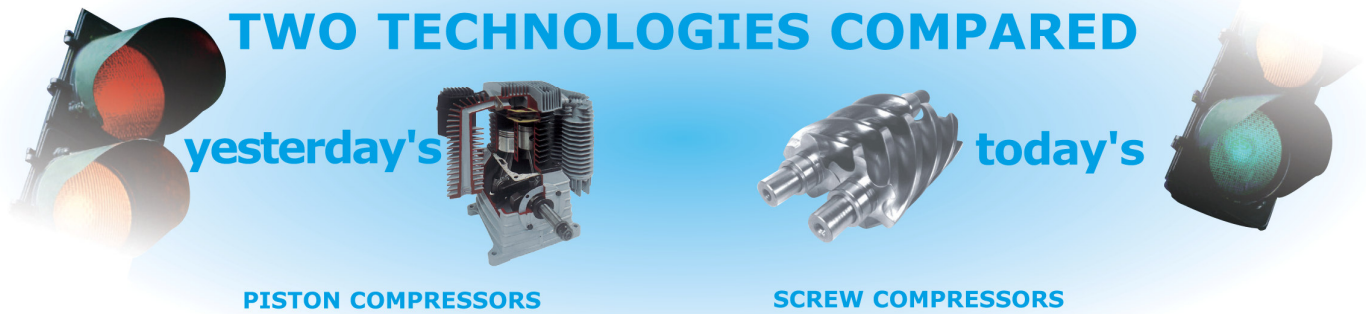
## Dry air

The MSM mini with MDX dryer is the winning solution for specific uses that require condensate-free air:

- supplies condensed air without condensate;
- safeguards the operation of the equipment;
- improves the quality of the final product;
- requires less space for installation;
- cancels the cost of installing the dryer;
- respects the environment with the use of ecological gas.



# Why choose MSM MINI



<u>70 - 75% of the intake air</u>	<b>Air yield</b>	<u>95% of the intake air</u> <u>More air with lower energy costs</u>
<u>Greater than 80 dB(A)</u>	<b>Sound level</b>	<u>MINI da 61 a 64 dB(A)</u> <u>Almost as low as a household appliance</u>
<u>For intermittent use</u>	<b>Operation</b>	<u>Also for continuous use</u> <u>An industrial technology</u>
<u>High content of residual oil and humidity</u>	<b>Air quality</b>	<u>Low oil content and dry air in the version with dryer</u> <u>Cleaner air for better production</u>
<u>Alternating and pulsing</u>	<b>Compression</b>	<u>Continuous and constant</u> <u>Uniform pressure in line for better functioning utilities</u>
<u>High</u>	<b>Vibrations</b>	<u>Absent</u> <u>More reliable components</u>
<u>From 7 to 10 times nominal value</u>	<b>Starting current</b>	<u>From 3 to 5 times nominal value in the star/delta version</u> <u>Lower energy consumption at start-up</u>
<u>Thermal circuit breaker</u>	<b>Protezioni standard</b>	<u>Magneto-thermal circuit breaker</u> <u>Greater operator safety</u>

Technological evolution, the ever greater needs of increasingly sophisticated users and respect for the environment are just three of the many reasons behind the MSM Mini's design  
**the small screw compressor with big compressor performance**

TYPE															
	bar	psi	hp	kW	l/min	m <sup>3</sup> /h	cfm	dB(A)	V/Hz/Ph	L	W	H	liters	gas	kg
<b>BASE MOUNTED COMPRESSOR</b>															
MSM 2,2/8 B* MINI	8	118	3	2,2	300	18,0	10,6	61	400/50/3	620	605	950	-	3/4	99
MSM 2,2/10 B* MINI	10	145	3	2,2	240	14,4	8,5	61	400/50/3	620	605	950	-	3/4	99
MSM 3/8 B MINI	8	118	4	3	445	26,7	15,8	61	400/50/3	620	605	950	-	3/4	103
MSM 3/10 B MINI	10	145	4	3	320	19,2	11,3	61	400/50/3	620	605	950	-	3/4	103
MSM 4/8 B MINI	8	118	5,5	4	560	33,6	19,8	62	400/50/3	620	605	950	-	3/4	105
MSM 4/10 B MINI	10	145	5,5	4	470	28,2	16,6	62	400/50/3	620	605	950	-	3/4	105
MSM 4/8 BX MINI	8	118	5,5	4	560	33,6	19,8	62	400/50/3	620	605	950	-	3/4	105
MSM 4/10 BX MINI	10	145	5,5	4	470	28,2	16,6	62	400/50/3	620	605	950	-	3/4	105
MSM 5,5/8 BX MINI	8	118	7,5	5,5	700	42,0	24,8	64	400/50/3	620	605	950	-	3/4	110
MSM 5,5/10 BX MINI	10	145	7,5	5,5	600	36,0	21,2	64	400/50/3	620	605	950	-	3/4	110
MSM 7,5/8 BX MINI	8	118	10	7,5	1008	60,5	35,7	66	400/50/3	620	635	975	-	3/4	160
MSM 7,5/10 BX MINI	10	145	10	7,5	920	55,2	32,6	66	400/50/3	620	635	975	-	3/4	160
<b>TANK MOUNTED COMPRESSOR</b>															
MSM 2,2/8 * MINI	8	118	3	2,2	300	18,0	10,6	61	400/50/3	1420	575	1255	200	1/2	155
MSM 2,2/10 * MINI	10	145	3	2,2	240	14,4	8,5	61	400/50/3	1420	575	1255	200	1/2	155
MSM 3/8 MINI	8	118	4	3	445	26,7	15,8	61	400/50/3	1420	575	1255	200	1/2	157
MSM 3/10 MINI	10	145	4	3	320	19,2	11,3	61	400/50/3	1420	575	1255	200	1/2	157
MSM 4/8 MINI	8	118	5,5	4	560	33,6	19,8	62	400/50/3	1420	575	1255	200	1/2	159
MSM 4/10 MINI	10	145	5,5	4	470	28,2	16,6	62	400/50/3	1420	575	1255	200	1/2	159
MSM 4/8 X MINI	8	118	5,5	4	560	33,6	19,8	62	400/50/3	1420	575	1255	200	1/2	159
MSM 4/10 X MINI	10	145	5,5	4	470	28,2	16,6	62	400/50/3	1420	575	1255	200	1/2	159
MSM 5,5/8 X MINI	8	118	7,5	5,5	700	42,0	24,8	64	400/50/3	1420	575	1255	200	1/2	164
MSM 5,5/10 X MINI	10	145	7,5	5,5	600	36,0	21,2	64	400/50/3	1420	575	1255	200	1/2	164
MSM 7,5/8 X MINI	8	118	10	7,5	1008	60,5	35,7	66	400/50/3	1420	648	1280	200	1/2	214
MSM 7,5/10 X MINI	10	145	10	7,5	920	55,2	32,6	66	400/50/3	1420	648	1280	200	1/2	214
<b>DRY VERSION COMPRESSOR - TANK - DRYER</b>															
MSM 2,2/8 D* MINI	8	118	3	2,2	300	18,0	10,6	61	400/50/3	1420	575	1255	200	1/2	187
MSM 2,2/10 D* MINI	10	145	3	2,2	240	14,4	8,5	61	400/50/3	1420	575	1255	200	1/2	187
MSM 3/8 D MINI	8	118	4	3	445	26,7	15,8	61	400/50/3	1420	575	1255	200	1/2	191
MSM 3/10 D MINI	10	145	4	3	320	19,2	11,3	61	400/50/3	1420	575	1255	200	1/2	191
MSM 4/8 D MINI	8	118	5,5	4	560	33,6	19,8	62	400/50/3	1420	575	1255	200	1/2	193
MSM 4/10 D MINI	10	145	5,5	4	470	28,2	16,6	62	400/50/3	1420	575	1255	200	1/2	193
MSM 4/8 DX MINI	8	118	5,5	4	560	33,6	19,8	62	400/50/3	1420	575	1255	200	1/2	193
MSM 4/10 DX MINI	10	145	5,5	4	470	28,2	16,6	62	400/50/3	1420	575	1255	200	1/2	193
MSM 5,5/8 DX MINI	8	118	7,5	5,5	700	42,0	24,8	64	400/50/3	1420	575	1255	200	1/2	198
MSM 5,5/10 DX MINI	10	145	7,5	5,5	600	36,0	21,2	64	400/50/3	1420	575	1255	200	1/2	198
MSM 7,5/8 DX MINI	8	118	10	7,5	1008	60,5	35,7	66	400/50/3	1420	648	1280	200	1/2	254
MSM 7,5/10 DX MINI	10	145	10	7,5	920	55,2	32,6	66	400/50/3	1420	648	1280	200	1/2	249

B = Base mounted

X = Star triangle

D = Dry with dryer

new version

**Std Version:**

- Star Delta start up
- Electric motor IP55
- First oil charge
- Available with different voltages
- Available also on 270 liters tank. Size (1498x582x1340) (1498x648x1365 for 10 hp). Weight: + 11 kg



The company reserves the right to make any changes from the point of view of continuous product improvement.



According to

