

# ENCLOSED HOSE-REELS IN A.B.S. - Series 260

wall support with bayonet hooking

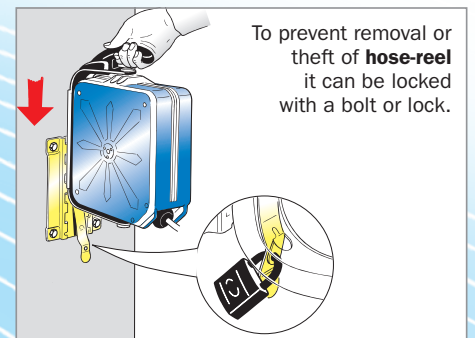
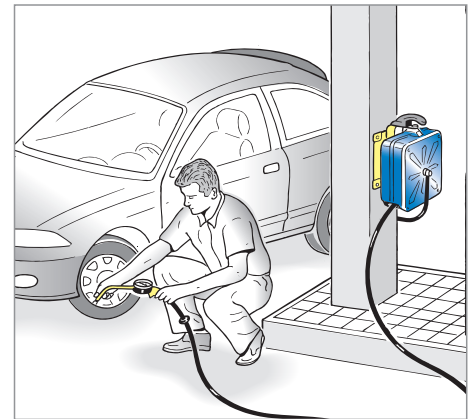
Enclosed automatic hose-reel in antishock A.B.S. for air and water with adjustable bayonet coupling bracket, indispensable for use with air-operated tools or delivery of water in all industries, workshops, service stations, garage, etc. The hose-reel allows the desired length of hose to be extracted quickly and easily, for better work and functionality.



Art.  
0A48010  
0A48011



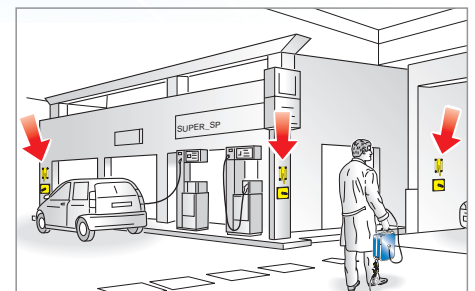
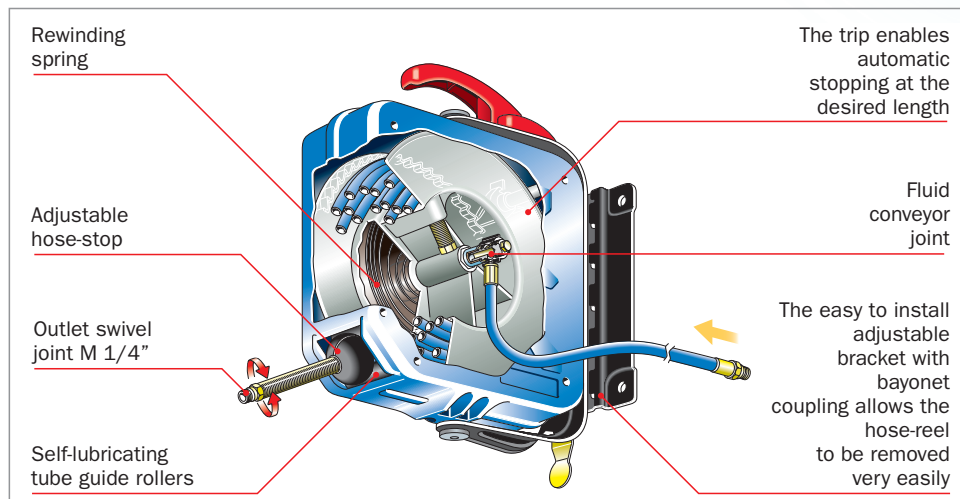
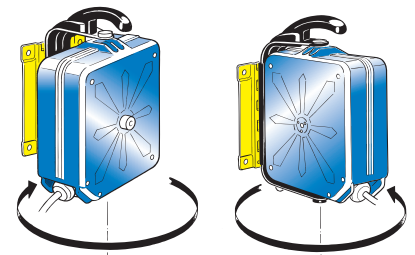
Art.  
0A48001



Air-Water - 20 bar		
Article	0A48010	0A48011
Flowrate	280 - 16 l/min	200 - 12 l/min
Hose	polyurethane 11 m (0A871.111)	polyurethane 11 m (0A871.011)
Connection hose	1,5 m	1,5 m
Diameter hose	ø 8 x 12 mm	ø 6 x 10 mm
Inlet and outlet connection	M 1/4" G	M 1/4" G
Max. working pressure	20 bar	20 bar
Working temperature	-20 +60 °C	-20 +60 °C

N° 1 packing m<sup>3</sup> 0,025 Kg 6,5

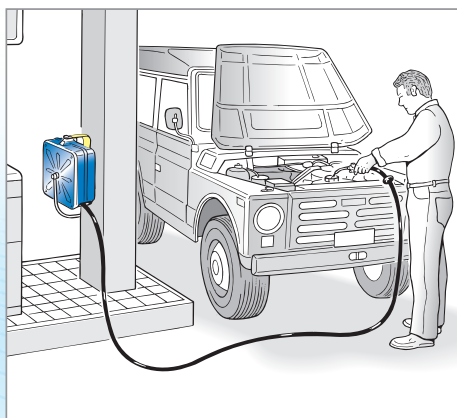
In this position the **hose-reel** can freely turn 140° to the right and left.



Each **hose-reel** is provided with a wall bracket (Art. 0A48001) facilitating wall mounting. This bracket is equipped with bayonet hooking enabling quick connection and disconnection of hose-reel thus enabling it to be shifted to various workpoints, after applying more brackets.

# ENCLOSED HOSE-REELS IN A.B.S. - Series 260

swivelling simple wall support



Enclosed automatic hose-reel in antishock A.B.S. for air and water with simple bracket, indispensable for use with air-operated tools or delivery of water in all industries, workshops, service stations, garage, etc. The hose-reel allows the desired length of hose to be extracted quickly and easily, for better work and functionality.



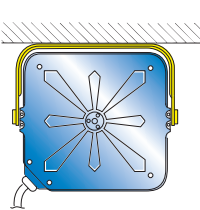
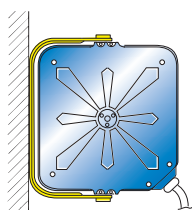
Art.  
0A48109  
0A48110

The hose-reels are equipped with an universal hose stop and provided with a 1,5 m connection hose

## HOSE-REEL INSTALLATION

wall-mounted

ceiling-mounted

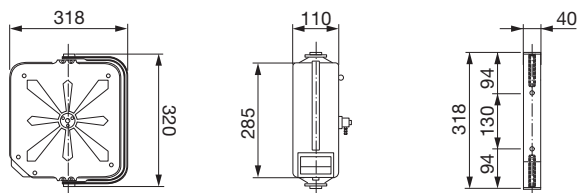


## Air-Water - 20 bar

Article	0A48109	0A48110
Flowrate	280 - 16 l/min	200 - 12 l/min
Hose	polyurethane 11 m (0A871.111)	polyurethane 11 m (0A871.011)
Connection hose	1,5 m	1,5 m
Diameter hose	ø 8 x 12 mm	ø 6 x 10 mm
Inlet and outlet connection	M 1/4" G	M 1/4" G
Max. working pressure	20 bar	20 bar
Working temperature	-20 +60 °C	-20 +60 °C

N° 1 packing m<sup>3</sup> 0,025 Kg 6

## OVERALL DIMENSIONS (Art. 0A48109 - 0A48110)



## OVERALL DIMENSIONS (Art. 0A48010 - 0A48011)

